

# **Public Information Requirements ACCE Standard Section VIII**

## **I. Construction Management Program Mission & Objectives**

The Construction Management Programs mission is to educate, mentor, and inspire students so that each graduate is prepared for a professional career in the construction industry and service to their community.

To support this mission, faculty will prepare graduates of the program to be able to:

1. Create written communications appropriate to the construction discipline.
2. Create oral presentations appropriate to the construction discipline.
3. Create a construction project safety plan.
4. Create construction project cost estimates.
5. Create construction project schedules.
6. Analyze professional decisions based on ethical principles.
7. Analyze construction documents for planning and management of construction processes.
8. Analyze methods, materials, and equipment used to construct projects.
9. Apply construction management skills as a member of a multi-disciplinary team.
10. Apply electronic-based technology to manage the construction process.
11. Apply basic surveying techniques for construction layout and control.
12. Understand different methods of project delivery and the roles and responsibilities of all constituencies involved in the design and construction process.
13. Understand construction risk management.
14. Understand construction accounting and cost control.
15. Understand construction quality assurance and control.
16. Understand construction project control processes.
17. Understand the legal implications of contract, common, and regulatory law to manage a construction project.
18. Understand the basic principles of sustainable construction.
19. Understand the basic principles of structural behavior.
20. Understand the basic principles of mechanical, electrical, and piping systems.
21. Think critically.

## **II. Program Admission Requirements**

The requirements for admission to the construction management program is the same as the requirements for admission to ECU. The scholastic requirements for full admission are:

All students must have a minimum high school GPA of 2.0 on a 4.0 scale and are expected to meet the college readiness standards in English, Reading, and Math or enroll in courses as directed at the time of registration. Students who do not meet the requirement for full admission may seek enrollment through a Success First Initiative.

### **III. Program Assessment Measures**

The Construction Management Program will measure success in achieving the program objectives by measuring the 20 ACCE Student Learning Outcomes (SLO) plus the 1 student learning outcome common across ECU. These 21 SLOs are:

Graduates of the program to be able to:

1. Create written communications appropriate to the construction discipline.
2. Create oral presentations appropriate to the construction discipline.
3. Create a construction project safety plan.
4. Create construction project cost estimates.
5. Create construction project schedules.
6. Analyze professional decisions based on ethical principles.
7. Analyze construction documents for planning and management of construction processes.
8. Analyze methods, materials, and equipment used to construct projects.
9. Apply construction management skills as a member of a multi-disciplinary team.
10. Apply electronic-based technology to manage the construction process.
11. Apply basic surveying techniques for construction layout and control.
12. Understand different methods of project delivery and the roles and responsibilities of all constituencies involved in the design and construction process.
13. Understand construction risk management.
14. Understand construction accounting and cost control.
15. Understand construction quality assurance and control.
16. Understand construction project control processes.
17. Understand the legal implications of contract, common, and regulatory law to manage a construction project.
18. Understand the basic principles of sustainable construction.
19. Understand the basic principles of structural behavior.
20. Understand the basic principles of mechanical, electrical, and piping systems.
21. Think critically.

Each SLO will be measured by a direct measure consisting of a specific class assignment, exam, or exam question, as identified in the next section. Each SLO will be indirectly measured during a senior exit survey, where seniors are asked to rank achievement of each SLO on a 1 – 5 scale. Each SLO will be measured directly and indirectly every year.

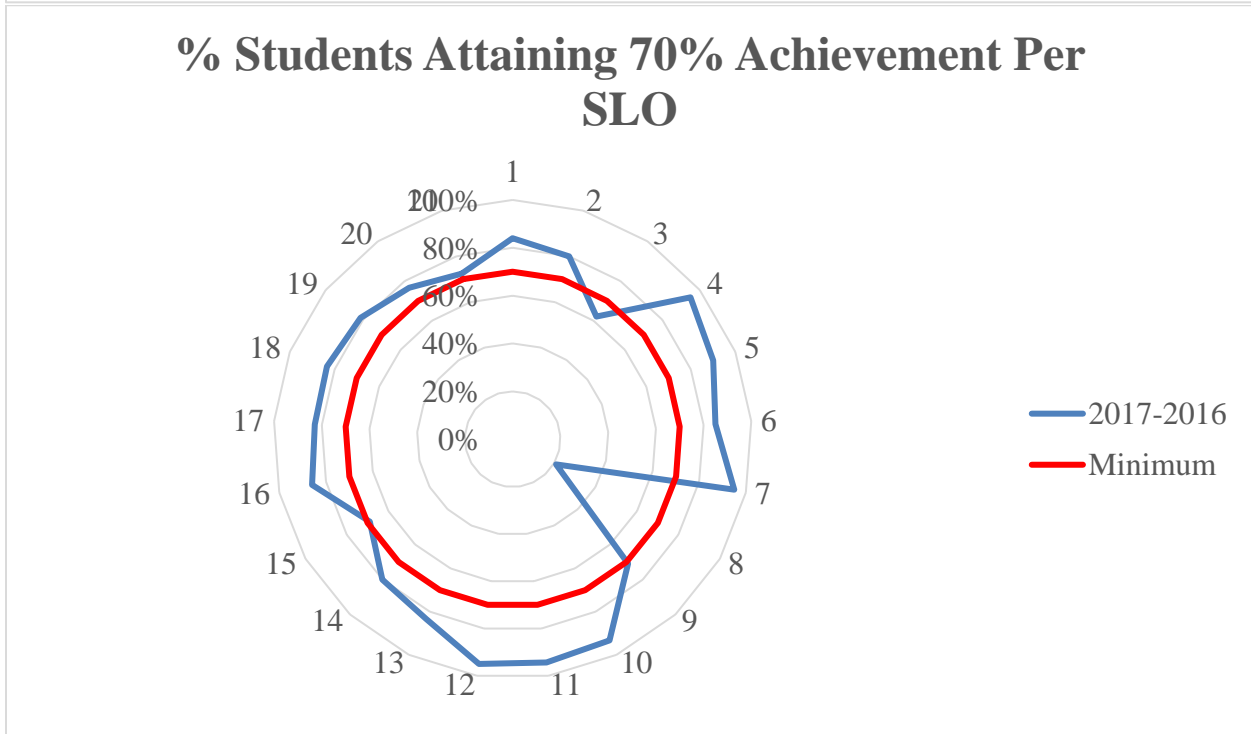
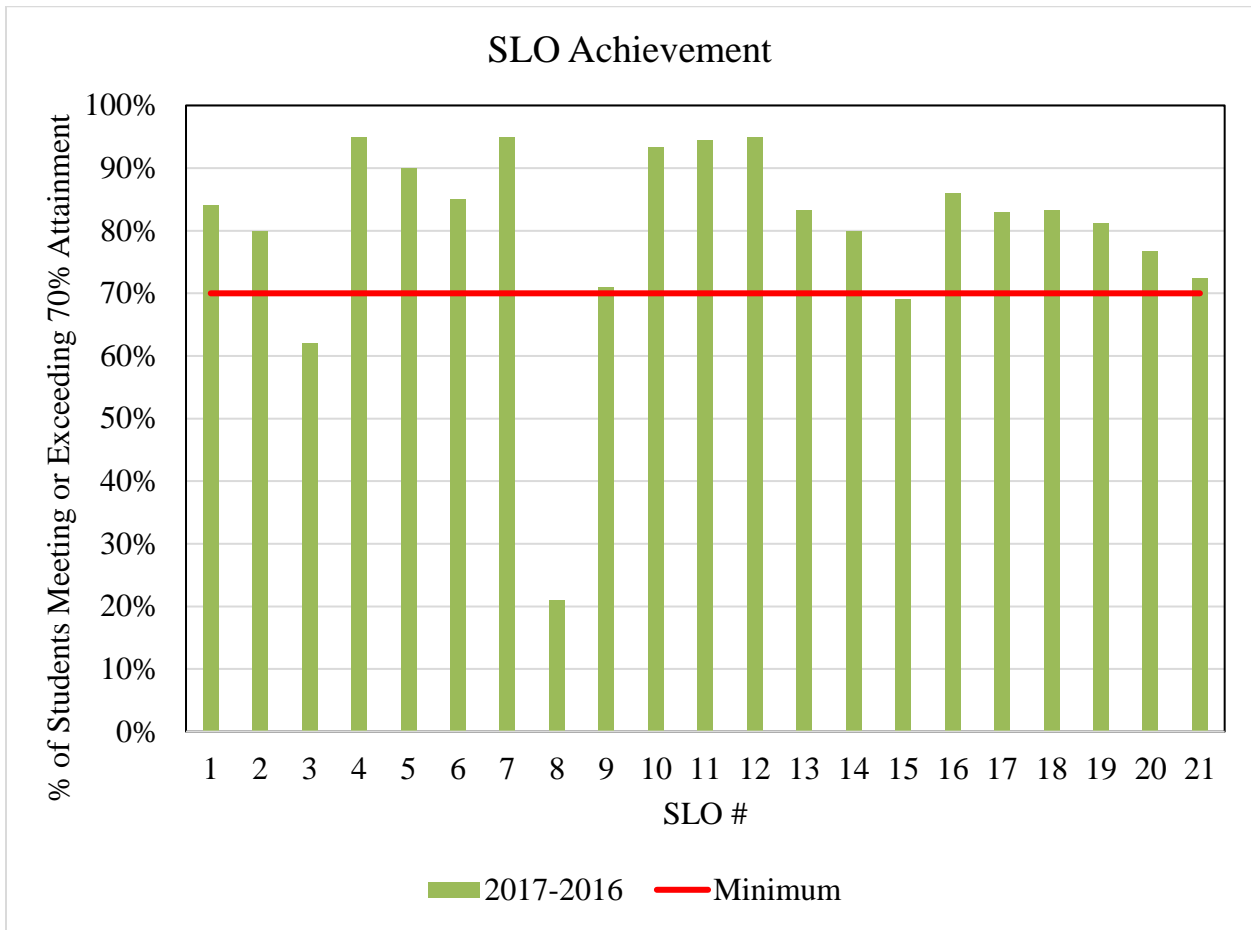
#### IV. Information Obtained from Assessment Measures and Actions Taken

The direct assessment measure for each SLO is provided in Table 4.1. The minimum acceptable level for each direct assessment was determined to be 70% of the students shall achieve a 70% on each measure.

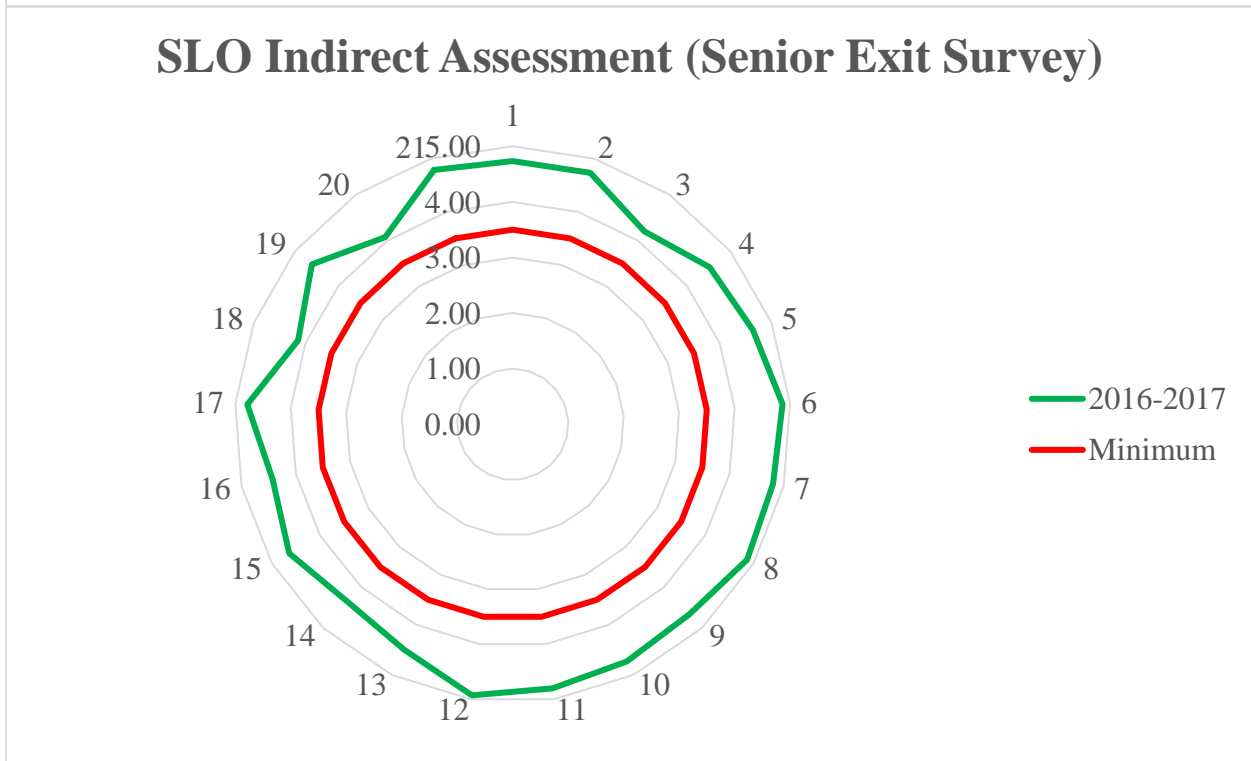
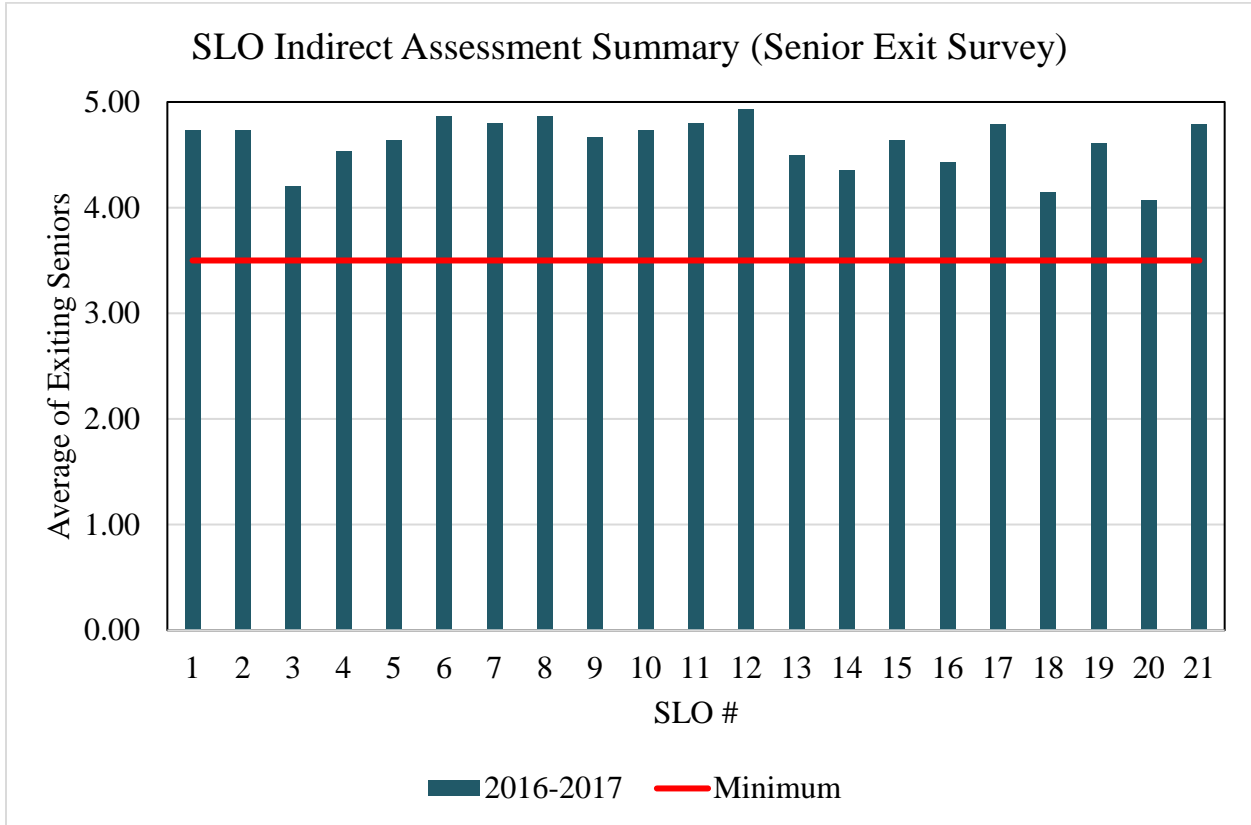
Table 4.1: Direct Assessment Measure for each SLO

SLO #	Assignment	Faculty Member
1	CON 325 Bid Package #1	Arias
2	CON 426 Assignment #6	Arias
3	CON 499 Safety Plan Assignment	Arias
4	CON 325 Bid Package #2	Arias
5	CON 426 Assignment #6	Arias
6	CON 426 Assignment #6	Arias
7	CON 426 Assignment #6	Arias
8	CON 202 Exam 3	Ellis
9	CON 425 Homework #3	Zhang
10	CON 325 Bid Package #5	Arias
11	CON 320 Staking Project	Dyer
12	CON 421 Exam 2	Zhang
13	CON 425 Exam	Zhang
14	CON 420 Exam	Zhang
15	CON 499 Quality Control Plan	Arias
16	CON 425 Assignment #5	Zhang
17	CON 421 Exam 1	Ellis
18	CON 201 Exam 1 Question	Ellis
19	CON 322 Exam 3	Zhang
20	CON 324 Exams	Arias
21	CON 425 Term Paper	Zhang

Results of Direct Assessment:

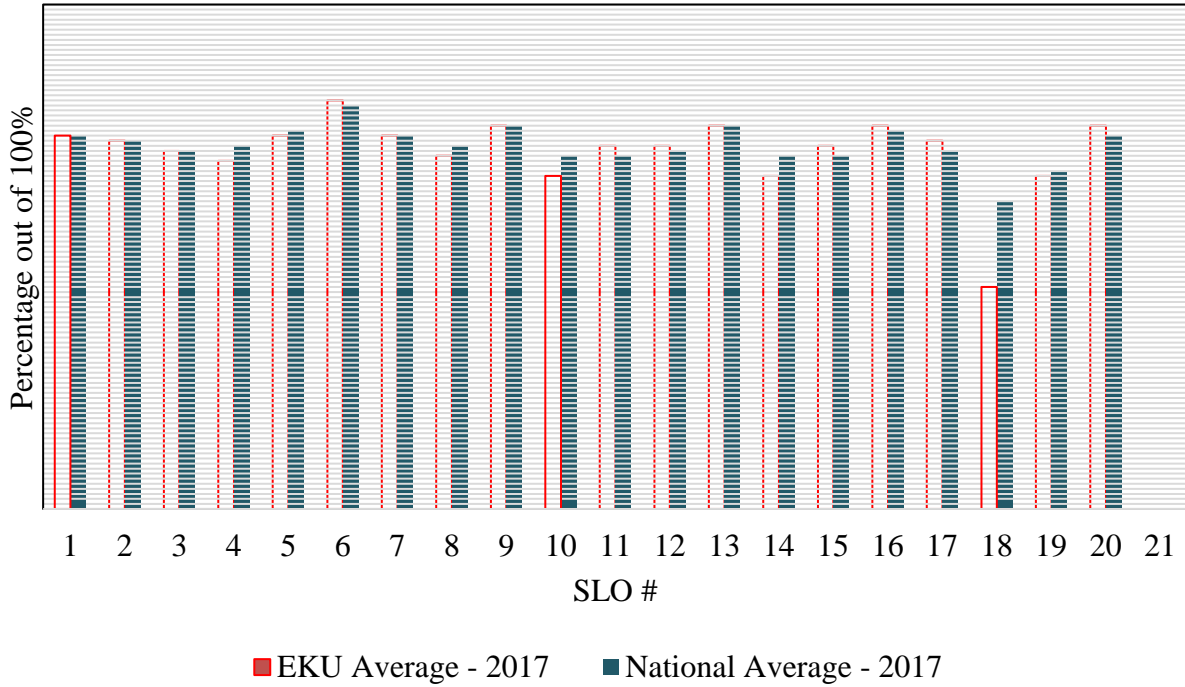


Results of Indirect Assessment: Each SLO was also assessed using a senior exit survey. The minimum acceptable level for the senior exit survey was a 3.5 on a 1 – 5 scale.

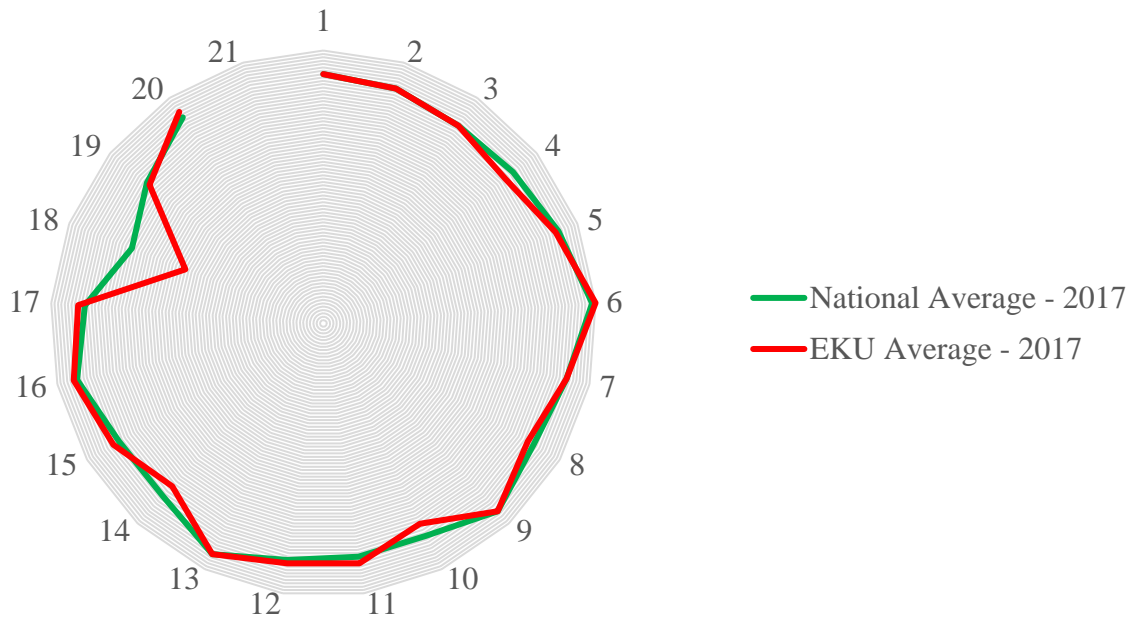


Results of Indirect Assessment: Each SLO was also assessed using the AIC Exam. The minimum acceptable level is to meet or exceed the National AIC Exam Average.

SLO Indirect Assessment Summary (AIC)



SLO Indirect Assessment (AIC)



## V. Student Achievement

- A. 2016-2017 Construction Management's Outstanding Senior – Clayton Mcalmond
- B. 2016-2017 Richard Brooker/Associated General Contractors of Kentucky – Alex Grenke
- C. 2016-2017 Murry Riffie HBA Scholarship – Matt Rose
- D. 2016-2017 Erekson Scholarship – Spencer Karrick

## VI. Rate and Types of Employment of Graduates

The location, sector, and job title for the 2016-2017 Graduates are given in table 6.1

Table 6.1: Location, Sector, and Job Title for 2016-2017 Graduates

<b>Location</b>	<b>Sector</b>	<b>Job Title</b>
Richmond, KY	Commercial	Project Manager
Lexington, KY	Commercial	Asst. Project Manager
Lexington, KY	Commercial	Project Engineer
Louisville, KY	Commercial	Project Engineer
Lexington, KY	Commercial	Estimator
Lexington, KY	Commercial	Project Engineer
Tobyhanna, PA	Government	Quality Control Manager
Martin, KY	Government	Site Safety Officer
Richmond, KY	Commercial	Project Engineer
Nashville, TN	Commercial	Project Engineer

Graduates of the Construction Management Program have been hired with the titles of Scheduler, Estimator, Superintendent, Project Coordinator, Project Manager, Project Engineer, Construction Management Superintendent, Site Superintendent, Assistant Construction Manager, Assistant Project Engineer, Safety Coordinator, Production Manager, QC/Plant Technician, and Assistant Superintendent.

Companies that have hired graduates are: mechanical contractors, masonry contractors, electrical contractors, residential contractors, design-builders, suppliers, general contractors, construction managers, material testing firms, pipeline testing firms, and home remodelers.

From summer 2012 to spring 2017, the salary range for the graduates who reported their initial salary was \$40,000 - \$96,000 with the average from Spring 2017 being \$60,044.00

## VII. Data

The data provided in this document is intended to satisfy the public disclosure requirements of ACCE accreditation, and to show that the Construction Management Program is striving to continually improve and provide graduates who are prepared for a professional career in the construction industry.